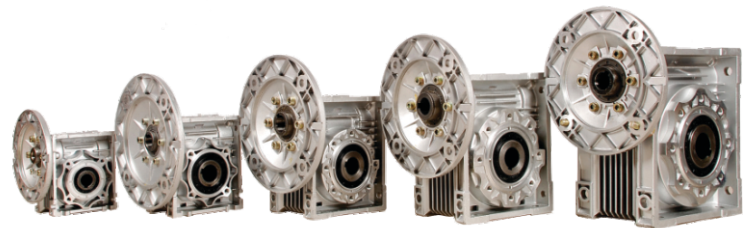


**Manufacturer of
Gearbox & Gear Motors**



WORM GEARBOX

PRODUCT DETAIL

Center Distance	: 2" to 10"
Ratio	: 10:1 to 70:1
Input Power	: 0.18kw to 25kw
Mounting	: Horizontal Mounting, Vertical Upward or Downward Mounting

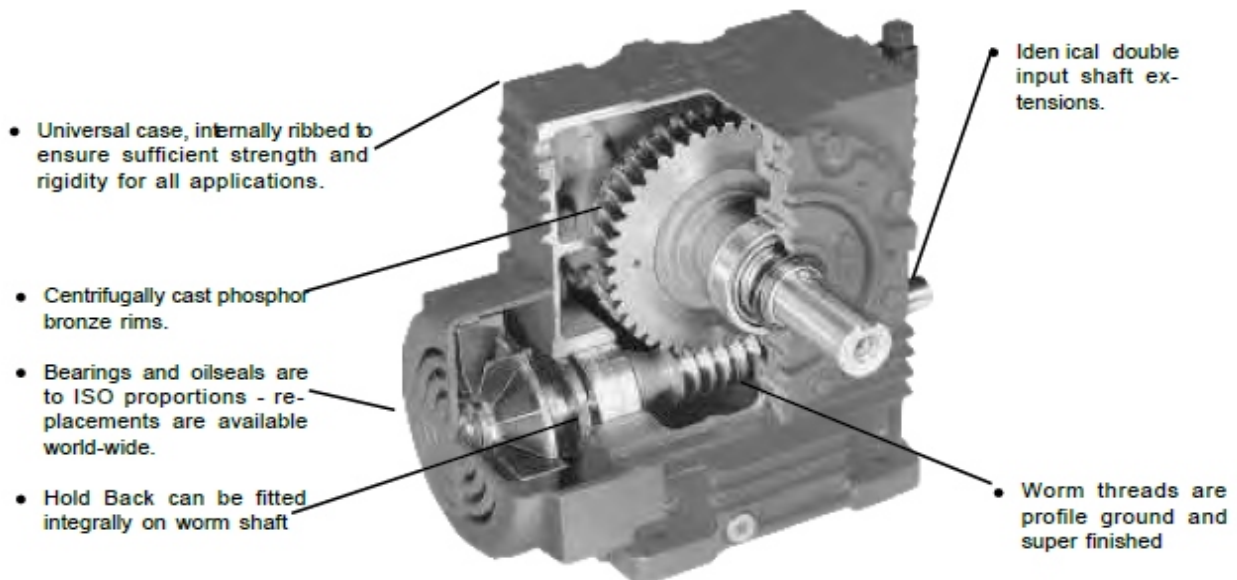
Gear Case : Gear Housing is made of Cast Iron. Its Completely Oil tight and Dust proof. Gear case has abundant Ribs which increase Heat dissipating area. Housing are machined on HMC machine to achieve better dimensional quality. Bore and face are accurately machined on latest precision machine to ensure perfect alignments.

Worm/Worm Wheel : The worm is made of case hardening alloy steel, Carburized and is integral with shaft. Worm Wheel is made of centrifugally cast phosphor-bronze rims, Shrink fitted and brazed with CI Centers. Worm are generated on special purpose Worm milling machine. Worm Wheel are hobbled on precision hobbing machine with higher accuracy hobbing cutters.

Bearings : The worm and worm wheel shafts are supported by reputed brand ball bearing which have good capacity to allow overhung & shock loads.

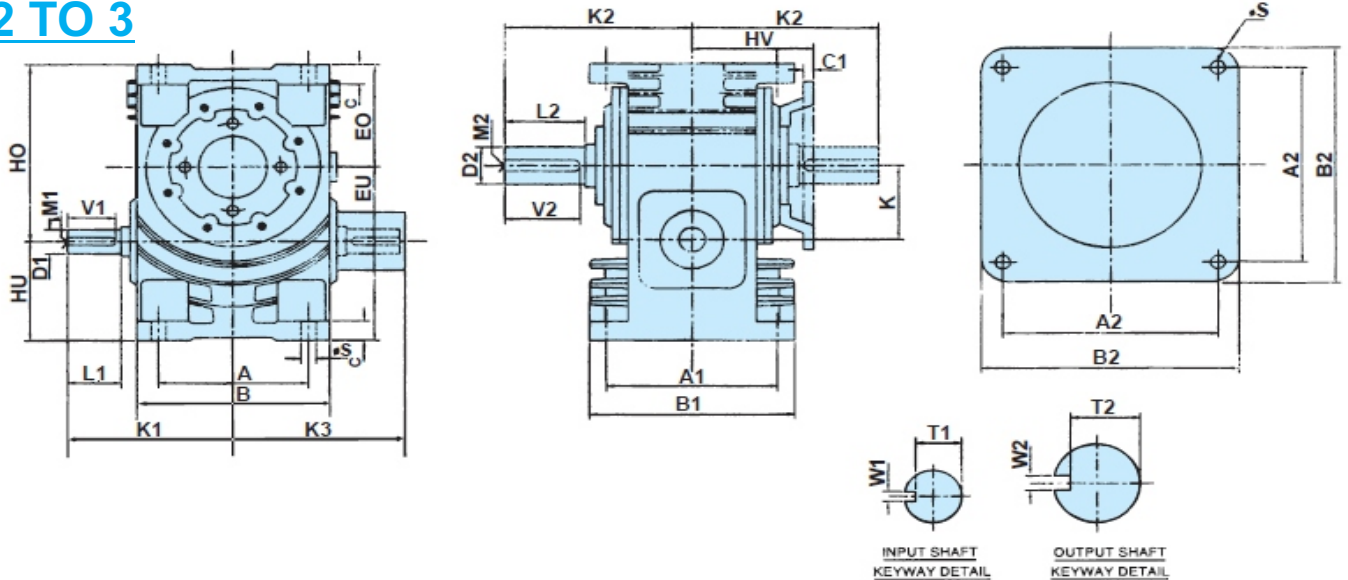
Oil seals : Superior quality oil seals are used to avoid any leakages.

Lubrication of Gearboxes: Lubrication to gear and Bearing is by splash of oil from sump. So no special Care is required except for the occasional topping up of the oil to the required level. We suggest Gear oil Grade 320 of any good brand.



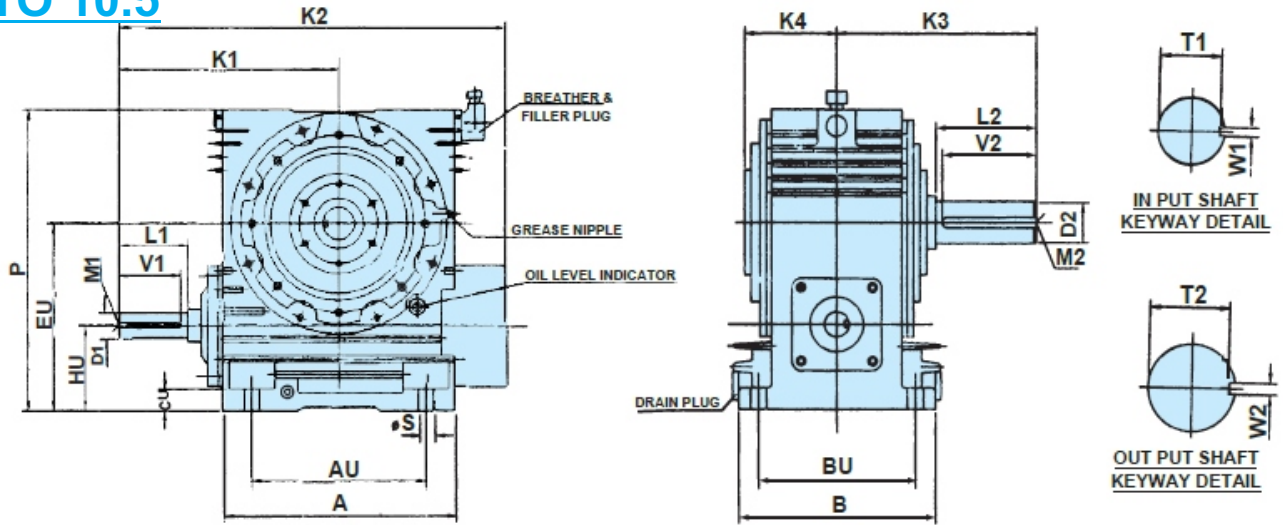
DIMENSION OF NU SERIES WORM GEAR BOX

NU 2 TO 3



SIZE	A	B	A1	B1	C	A2	B2	C1	F S	HU	EU	HO	EO	HV	K	K1	K2	K3	D1	L1	M1	T1	W1	D2	L2	M2	T2	W2	V1	V2
2	95	142	100	125	14	120	150	14	11	70	120.8	133.8	83	94	50.8	133	128	140	16	47		13.0	5	25	57		21	8	45	55
2.25	105	152	105	132	14	120	150	14	11	70	127.1	142.2	85	100	57.2	142	136	150	22	50		18.5	6	25	60		21	8	45	55
3	140	180	160	192	20	200	240	16	14	102	178.2	181.2	105	125	76.2	155	175	165	25	50	MB	21.0	8	38	75	M16	33	10	45	70

NU 4 TO 10.5



SIZE	A	AU	B	BU	CU	? S	HU	EU	P	D1	L1	V1	M1	T1	W1	K1	K2	D2	L2	V2	M2	T2	W2	K3	K4
4 SNU	25	180	200	160	25	18	108	209.6	325	32	65	60	M12	27	10	215	440	45	90	85	M16	39.5	14	215	115
5 SNU	300	220	252	200	30	18	118	245	385	35	70	65	M12	30	10	242	492	50	100	95	M16	44.5	14	235	130
6 SNU	354	266	302	241	32	23	127	279.4	450	38	75	70	M12	33	10	279	580	58	114	111	M20	52.0	16	274	155
7 SNU	400	306	340	265	36	23	146	323.8	524	40	82	79	M16	35	12	311	656	65	130	127	M20	58.0	18	287	160
8 SNU	440	343	340	265	40	27	146	349.2	574	45	88	85	M16	39.5	14	342	710	70	140	137	M20	62.5	20	312	175
9 SNU	490	390	344	282	40	27	154	382.6	635	50	95	92	M16	44.5	14	375	776	75	145	140	M20	67.5	20	325	180
10.5 SNU	590	432	430	330	50	33	172	438.7	720	60	115	110	M20	53	18	450	925	80	150	147	M20	71.0	22	352	200

RATINGS AT INPUT SPEED 1500 R.P.M.

GEAR RATIO	OUTPUT SPEED R.P.M.	CAPACITY	SIZE OF UNIT					
			1 $\frac{5}{8}$	1 $\frac{3}{4}$	2	2 $\frac{1}{4}$	3	3.54
5	300	INPUT POWER KW	1.46	2	2.9	3.8	8	12.5
		OUTPUT TORQUE Nm	44.2	56.6	83.1	112.52	31.8	362.1
7.5	200	INPUT POWER KW	1.3	1.45	2.2	3	6.86	8
		OUTPUT TORQUE Nm	54.6	61	92.4	127	294.8	343.8
10	150	INPUT POWER KW	1.2	1.3	1.75	2.8	5.75	7
		OUTPUT TORQUE Nm	69.5	74.5	97	146	325.8	392.2
15	100	INPUT POWER KW	1.14	1.2	1.6	1.9	4.13	6
		OUTPUT TORQUE Nm	90.36	96.3	122.2	154.2	347.1	492.8
20	75	INPUT POWER KW	0.8	0.83	1.5	1.62	3.78	4.6
		OUTPUT TORQUE Nm	86.6	88.8	149	161	404.3	503.7
25	60	INPUT POWER KW	0.7	0.72	1.3	1.44	3.15	4
		OUTPUT TORQUE Nm	79.1	90	155.1	176.5	411.1	547.5
30	50	INPUT POWER KW	0.6	0.63	1.15	1.3	2.75	3.6
		OUTPUT TORQUE Nm	85.6	91.5	160.3	186.2	430.7	550
40	37.5	INPUT POWER KW	0.45	0.5	0.8	0.97	2.27	2.8
		OUTPUT TORQUE Nm	88	94.3	146.7	177.9	439.4	549.1
50	30	INPUT POWER KW	0.34	0.36	0.65	0.72	1.82	2.1
		OUTPUT TORQUE Nm	70.4	78	145	160.4	423	508
60	25	INPUT POWER KW	0.3	0.31	0.45	0.55	1.6	1.8
		OUTPUT TORQUE Nm	58.5	75.8	110	140.7	434	515.7
70	21.4	INPUT POWER KW	0.26	0.27	0.4	0.43	1.3	1.13
		OUTPUT TORQUE Nm	58.1	74	107	124.7	406.1	462.3

RATINGS AT INPUT SPEED 1500 R.P.M.

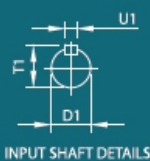
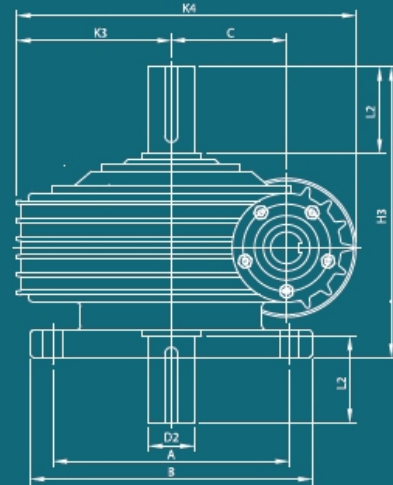
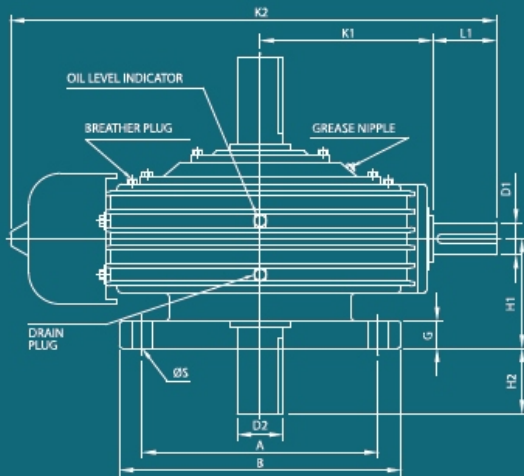
GEAR RATIO	OUTPUT SPEED R.P.M.	CAPACITY	SIZE OF UNIT						
			4	5	6	7	8	9	10.5
5	300	INPUT POWER KW	14.1	23.5	41	55	72	82.4	139.3
		OUTPUT TORQUE Nm	420.1	710.6	1253	1646.6	2177.4	2491.2	4260.2
7.5	200	INPUT POWER KW	10	18.2	27	43.2	58	63.4	94
		OUTPUT TORQUE Nm	444.1	820	1211.9	1935	2603	2933.2	4309
10	150	INPUT POWER KW	8.5	16.5	24	33.1	46	74.5	84
		OUTPUT TORQUE Nm	503.3	966.5	1444	1952.3	2753	4506	4920.2
15	100	INPUT POWER KW	7	12	21.5	30	40	56	63
		OUTPUT TORQUE Nm	568.2	986	1827.4	2580	3514.4	5027	5535.2
20	75	INPUT POWER KW	6.1	11.5	16.2	25.8	31.2	48	55.2
		OUTPUT TORQUE Nm	652.8	1205.2	1836.8	2814	3496.1	5447.3	6393.2
25	60	INPUT POWER KW	5	9	13	20	28	42	48
		OUTPUT TORQUE Nm	684.4	1218.3	1810.5	2706	3788.2	6061.5	6723.2
30	50	INPUT POWER KW	4.5	7.5	12.2	17	23	40	42
		OUTPUT TORQUE Nm	747.8	1217.6	1980.7	2760	3778	6876	7059.3
40	37.5	INPUT POWER KW	3.8	5.8	10.4	15	20	32	36
		OUTPUT TORQUE Nm	754.8	1168	2118.8	3132.4	4278.4	7253	7793
50	30	INPUT POWER KW	3	5	8.5	13	17	27	32
		OUTPUT TORQUE Nm	764	1257.4	2088.4	3228	4437.5	7220	8455
60	25	INPUT POWER KW	2.6	4.2	7	11	14	22	27.4
		OUTPUT TORQUE Nm	739.9	1171.2	2032.2	3193.5	4011	6597	8373
70	21.4	INPUT POWER KW	32.3	3.6	5.8	8.5	11.3	19	24.5
		OUTPUT TORQUE Nm	759.5	1124.6	1811.8	2769.1	3782	6868	8528



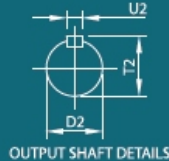
FVD



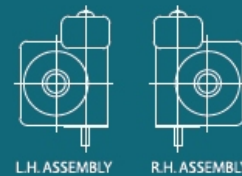
FVU



INPUT SHAFT DETAILS



OUTPUT SHAFT DETAILS



L.H. ASSEMBLY

R.H. ASSEMBLY

SIZE	MOUNTING DETAILS				CLEARANCE DIMENSIONS								SHAFT END DIMENSIONS							
	A	B	G	S	C	H1	H2	H3	K1	K2	K3	K4	D1	U1	T1	L1	D2	U2	T2	L2
FV 3	200	240	20	14	76.2	125	61	311	111	348	118	280	25	8	28	57	38	10	41	75
FV 3.5	210	250	20	14	88.9	125	51	302	133	415	126	340	32	10	35	70	44	12	47	76
FV 4	235	285	25	18	101.6	140	75	355	165	469	140	327	32	10	35	64	45	14	48.5	88
FV 5	260	320	30	22	127	160	72	392	190	535	170	403	35	10	38	70	50	14	53.5	95
FV 6	270	340	35	24	152.4	180	94	454	204	574	195	462	38	10	41	76	58	16	62	114
FV 7	320	400	40	26	177.8	200	57	457	229	636	222	530	40	12	43	82	65	18	69	100
FV 8	360	440	45	26	203.2	220	92	532	254	704	244	595	45	14	48.5	88	70	20	74.5	140
FV 9	410	490	50	26	228.6	240	65	545	280	770	272	660	50	14	53.5	95	75	20	79.5	125
FV 10.5	460	560	55	33	266.7	260	92	612	335	911	320	765	60	18	64	115	80	22	85.5	150
FV 12	500	620	60	33	304.8	280	101	661	360	990	350	850	60	18	64	125	85	22	90.5	165

NOTE : • ALL DIMENSIONS ARE IN mm.
 • THESE DIMENSIONS ARE FOR PRELIMINARY USE ONLY AND ARE SUBJECT TO OUR CONFIRMATION.
 • SHAFT DIA TOLERANCE UPTO 58 DIA k6 & ABOVE 58 DIA m6

APPROXIMATE OIL CAPACITY IN SNU GEARBOX

SIZE	2.25	2.5	3	3.5	4	5	6	7	8	9	10.5
OIL IN Ltr	2	2	2.5	3.5	3.5	6	10	12	14	16	23

OIL GRADE : Gear oil grade should GEAROIL 320 OR GEAR OIL 280 any reliable brand like castrol , bharat petroleum, esso, mobil, brugarollas, gulf, veedol, indian oil, Hindustan petroleum.

APPLICATION OF SNU GEARBOX

Agitators and mixture
Clay processing and Stone crusher
Conveyors
Food processing
Material Handling machine
Elevators
oil industries
Paper Mill, Rolling Mill
Rubber and Plastic industries
Sugar Mills
Textile industries
Steel plants
Cement Plants
Ceramic Industries



NU-VU



NU-H



NU-VD

About Us

SPEEDO GEAR PVT. LTD. (SGPL) is an Engineering, Technology & Innovation focused Engineering services provider with global operations.

SGPL established in 2021 (Formerly known as Speedo Drive and operating since 2010)

We are glad to introduce ourselves as a leading manufacturer and exporter of Gear Box & Gear Motor in Ahmedabad, India. Our brand name **“SPEEDO GEAR”** has made its goodwill all over the India. Our product range consists of SP & M Series - Inline Helical Gearboxes, NMRV Gear Boxes, Worm Gear Motor, Helical Gear Motor, AC Induction Motors. Based on a strong foundation of 10 years of experienced and qualified team, we are one of the rapidly growing industries in terms of quality, design, and technical aspects. The phenomenal success of the organization in the last few years has been largely due to the hard work and dedication of its diligent workforce.

Our dynamic leadership has made the company competent and well-qualified professionals to attain and maximize clients' satisfaction we don't believe in just supplying machine but believe in building a long time business relationship by committed quality, proper pre and after sales services and adjusting to customer's requirements. That is why today we have a manufactured global base with thousands of SPEEDO Gear Boxes operational all over the nation.

Our administrative and manufacturing practices, coupled with ISO 9001-2015 certified procedures yield continual improvements in quality and on-time delivery performance that rank us amongst the best in our industry. We have a relentless commitment to excellence, innovation and sustain ability. Our team creates, distributes and services world-class power transmission solutions to keep the India. SGPL shall achieve excellence in its Manufacturing activity with focus on Zero Defect, On Time Delivery and Enhancing Range of Products.

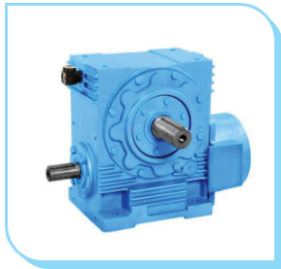
MANUFACTURING FACILITY

We have a state of art manufacturing facility in Ahmedabad, Gujarat India. We have TOS make Gear Hobbing machine, TOS Make grinding machine, CNC turning center to ensure high quality standards. Our gear case are always process on HMC machine only to obtain higher quality. We use the following high class manufacturing & testing facilities.

OUR VISION

Quality & precision are one of the key objectives of concern at SPEEDO GEAR on the production line. We take it as a responsibility and not as a standard of requirement.





Manufacturer of Gearbox & Gear Motors

B/10/1, Anup Estate, B/h. Bharat Party Plot, Rabari Colony Cross Road,
Amraiwadi, Ahmedabad-380026, Gujarat, India.

Email : speedogearpvtltd@gmail.com

Website : www.speedogears.com

M : +91 901671 0550, 95129 10550