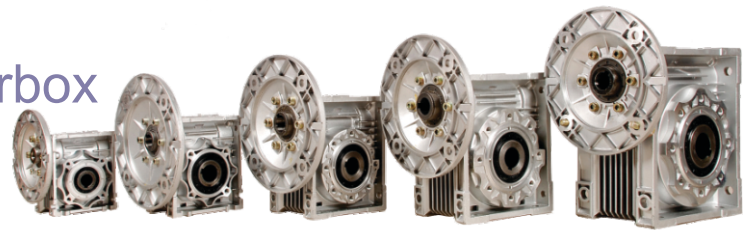


AC INDUCTION MOTOR



Manufacturer of
AC Induction Motor and Gearbox



TECHNICAL FEATURES OF THREE PHASE MOTOR

Range

0.25 H.P. to 10 H.P. (0.18 K.W. to 7.5 K.W.) Frame 63 to 132 L in 2, 4, 6 Pole in 1440 , 960, 2800 rpm

Mounting

- Foot – B3
- Flange – B5
- Face – B14
- Foot / Flange – B3 /B5
- Foot / Face - B3 / B14

Standards

Performance conforms to be: IS 325 and dimensions according to IS 1231 & IS 2223

Frame

Motor are supplied in a robust, rugged cast iron frame with integral feet. 0.25 HP to 10.0 HP Flange and foot mount (frame 63-90) in aluminum die casted body for higher class finishing. Frame 100 to 132 in available cast iron. Motor color available in silver, blue and silver - blue combination also.

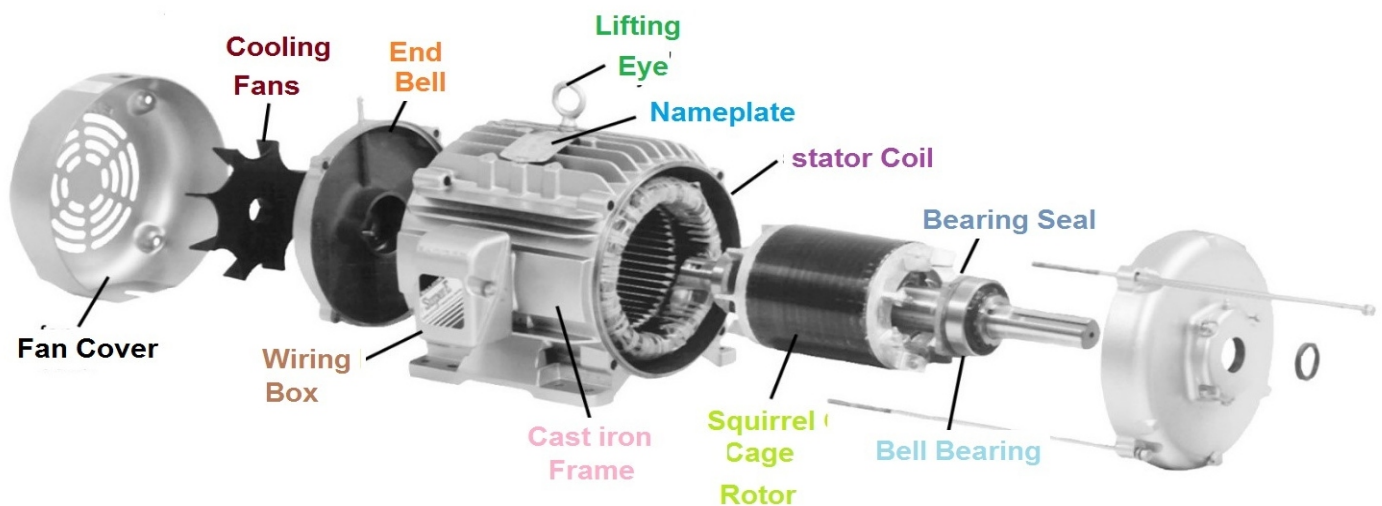
Ratings

All Standard Three phase Motors are continuous rated to comply with performance standards. We are also supply 3 phase motor in start delta connection to suitable VFD drive.

Voltage and Frequency

Supply volts 415 +- 5% 3 phase 50 Hz. +- 3% (on customer request we are also able supply motor in 220, 380 volts on HZ. 50 or 60 Also)

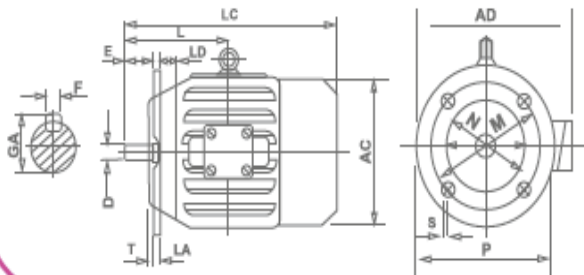
Parts of Three Phase Induction Motor



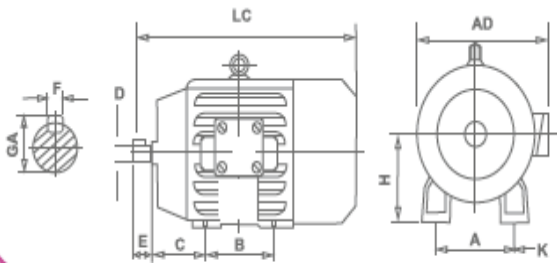
DIMENSION OF AC MOTORS



FLANGE MOUNTED MOTORS



FOOT MOUNTED MOTORS



DIMENSIONS

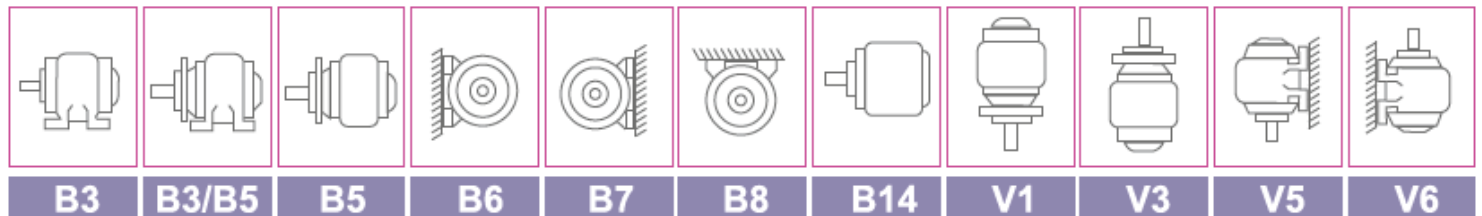
FRAME	AC	AD	D	E	F	GA	L	LA	LC	LD	M	N	P	S	T
63	127	115	11	23	4	12.5	103	9	206	16	115	95	140	10	3
71	142	140	14	30	5	16	120	9	235	16	130	110	160	10	3.5
80	161	200	19	40	6	21.5	140	10	300	16	165	130	200	12	3.5
90S	180	231	24	50	8	27	156	10	333	16	165	130	200	12	3.5
90I	180	231	24	50	8	27	168.5	10	333	16	165	130	200	12	3.5
100L	201	260	28	60	8	31	193	11	373	24	215	180	250	15	4
112M	225	283	28	60	8	31	200	11	390	24	215	180	250	15	4
132S	264	317	38	80	10	41	239	12	440	24	265	230	300	15	4
132M	264	320	38	80	10	41	258	12	490	24	265	230	300	15	4
160M	330	381	42	110	12	45	323	13	582	32	300	250	350	19	5
160L	330	381	42	110	12	45	345	13	625	32	300	250	350	19	5
180M	363	448	48	110	14	51.5	351.5	13	670	32	300	250	350	19	5
180L	363	448	48	110	14	51.5	370.5	13	705	32	300	250	350	19	5

DIMENSIONS

OUTPUT HP. AT RPM

FRAME	A	AD	B	C	D	E	F	GA	H	KI	LC	OUTPUT HP. AT RPM			
												3000	1500	1000	750
63	100	115	80	40	11	23	4	12.5	63	7	206	0.25/0.33	0.16/0.25	-	-
71	112	140	90	45	14	30	5	16	71	7	235	0.50/0.75	0.33/0.50	-	-
80	125	200	100	50	19	40	6	21.5	80	10	300	1.0/1.5	0.75/1.0	0.50/0.75	-
90S	140	231	100	56	24	50	8	27	90	10	333	2	1.5	1	0.50
90L	140	231	125	56	24	50	8	27	90	10	333	3	2	1.5	0.75
100L	160	260	140	63	28	60	8	31	100	12	373	5	3	2	1/1.5
112M	190	283	140	70	28	60	8	31	112	12	390	-	5	3	2
132S	216	317	140	89	38	80	10	41	132	12	440	7.5/10	7.5	5	3
132M	216	320	178	89	38	80	10	41	132	12	490	12.5	10	7.5	-
160M	254	381	210	108	42	110	12	45	160	15	582	15/20	12.5/15	10	5/7.5
160L	254	381	254	108	42	110	12	45	160	15	625	25	20	12.5/15	10
180M	279	448	241	121	48	110	14	51.5	180	15	670	30	25	-	12.5
180L	279	448	279	121	48	110	14	51.5	180	15	705	-	30	20	15

TYPE OF CONSTRUCTION



B3

B3/B5

B5

B6

B7

B8

B14

V1

V3

V5

V6

About Us

SPEEDO GEAR PVT. LTD. (SGPL) is an Engineering, Technology & Innovation focused Engineering services provider with global operations.

SGPL established in 2021 (Formerly known as Speedo Drive and operating since 2010)

We are glad to introduce ourselves as a leading manufacturer and exporter of Gear Box & Gear Motor in Ahmedabad, India. Our brand name **"SPEEDO GEAR"** has made its goodwill all over the India. Our product range consists of SP & M Series - Inline Helical Gearboxes, NMRV Gear Boxes, Worm Gear Motor, Helical Gear Motor, AC Induction Motors. Based on a strong foundation of 10 years of experienced and qualified team, we are one of the rapidly growing industries in terms of quality, design, and technical aspects. The phenomenal success of the organization in the last few years has been largely due to the hard work and dedication of its diligent workforce.

Our dynamic leadership has made the company competent and well-qualified professionals to attain and maximize clients' satisfaction we don't believe in just supplying machine but believe in building a long time business relationship by committed quality, proper pre and after sales services and adjusting to customer's requirements. That is why today we have a manufactured global base with thousands of SPEEDO Gear Boxes operational all over the nation.

Our administrative and manufacturing practices, coupled with ISO 9001-2015 certified procedures yield continual improvements in quality and on-time delivery performance that rank us amongst the best in our industry. We have a relentless commitment to excellence, innovation and sustain ability. Our team creates, distributes and services world-class power transmission solutions to keep the India. SGPL shall achieve excellence in its Manufacturing activity with focus on Zero Defect, On Time Delivery and Enhancing Range of Products.

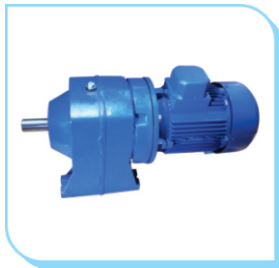
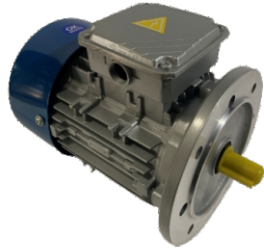
MANUFACTURING FACILITY

We have a state of art manufacturing facility in Ahmedabad, Gujarat India. We have TOS make Gear Hobbing machine, TOS Make grinding machine, CNC turning center to ensure high quality standards. Our gear case are always process on HMC machine only to obtain higher quality. We use the following high class manufacturing & testing facilities.

OUR VISION

Quality & precision are one of the key objectives of concern at SPEEDO GEAR on the production line. We take it as a responsibility and not as a standard of requirement.





Manufacturer of Gearbox & Gear Motors

B/10/1, Anup Estate, B/h. Bharat Party Plot, Rabari Colony Cross Road,
Amraiwadi, Ahmedabad-380026, Gujarat, India.

Email : speedogearpvtltd@gmail.com

Website : www.speedogears.com

M : +91 901671 0550, 95129 10550